

# User's Guide

## W2600H W2600HP

**M**ake sure to read the **Important Precautions** before using the product.

Keep the User's Guide(CD) in an accessible place for future reference.

**S**ee the label attached on the product and give the information to your dealer when you ask for service.

**This unit has been engineered and manufactured to ensure your personal safety, however improper use may result in potential electrical shock or fire hazards. In order to allow the proper operation of all safeguards incorporated in this display, observe the following basic rules for its installation, use, and servicing.**

## On Safety

Use only the power cord supplied with the unit. In case you use another power cord, make sure that it is certified by the applicable national standards if not being provided by the supplier. If the power cable is faulty in any way, please contact the manufacturer or the nearest authorized repair service provider for a replacement.

The power supply cord is used as the main disconnection device. Ensure that the socket-outlet is easily accessible after installation.

Operate the display only from a power source indicated in the specifications of this manual or listed on the display. If you are not sure what type of power supply you have in your home, consult with your dealer.

Overloaded AC outlets and extension cords are dangerous. So are frayed power cords and broken plugs. They may result in a shock or fire hazard. Call your service technician for replacement.

Do not Open the Display.

- There are no user serviceable components inside.
- There are Dangerous High Voltages inside, even when the power is OFF.
- Contact your dealer if the display is not operating properly.

To Avoid Personal Injury :

- Do not place the display on a sloping shelf unless properly secured.
- Use only a stand recommended by the manufacturer.
- Do not drop an object on or apply impact to the product. Do not throw any toys or objects on the product screen.

It can cause injury to human, problem to product and damage the display.

To Prevent Fire or Hazards:

- Always turn the display OFF if you leave the room for more than a short period of time. Never leave the display ON when leaving the house.
- Keep children from dropping or pushing objects into the display's cabinet openings. Some internal parts carry hazardous voltages.
- Do not add accessories that have not been designed for this display.
- When the display is to be left unattended for an extended period of time, unplug it from the wall outlet.
- In the presence of thunder and lightning, never touch the power cord and signal cable because it can be very dangerous. It can cause electric shock.

## On Installation

Do not allow anything to rest upon or roll over the power cord, and do not place the display where the power cord is subject to damage.

Do not use this display near water such as near a bathtub, washbowl, kitchen sink, laundry tub, in a wet basement, or near a swimming pool.

Displays are provided with ventilation openings in the cabinet to allow the release of heat generated during operation. If these openings are blocked, built-up heat can cause failures which may result in a fire hazard. Therefore, NEVER:

- Block the bottom ventilation slots by placing the display on a bed, sofa, rug, etc.
- Place the display in a built-in enclosure unless proper ventilation is provided.
- Cover the openings with cloth or other material.
- Place the display near or over a radiator or heat source.

Do not rub or strike the Active Matrix LCD with anything hard as this may scratch, mar, or damage the Active Matrix LCD permanently.

Do not press the LCD screen with your finger for a long time as this may cause some afterimages.

Some dot defects may appear as Red, Green or Blue spots on the screen. However, this will have no impact or effect on the display performance.

If possible, use the recommended resolution to obtain the best image quality for your LCD display. If used under any mode except the recommended resolution, some scaled or processed images may appear on the screen. However, this is characteristic of the fixed-resolution LCD panel.

## On Cleaning

- Unplug the display before cleaning the face of the display screen.
- Use a slightly damp (not wet) cloth. Do not use an aerosol directly on the display screen because over-spraying may cause electrical shock.

## On Repacking

- Do not throw away the carton and packing materials. They make an ideal container in which to transport the unit. When shipping the unit to another location, repack it in its original material.

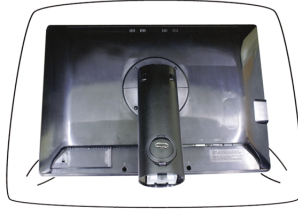
## On Disposal

- The fluorescent lamp used in this product contains a small amount of mercury.
- Do not dispose of this product with general household waste.  
Disposal of this product must be carried out in accordance to the regulations of your local authority.

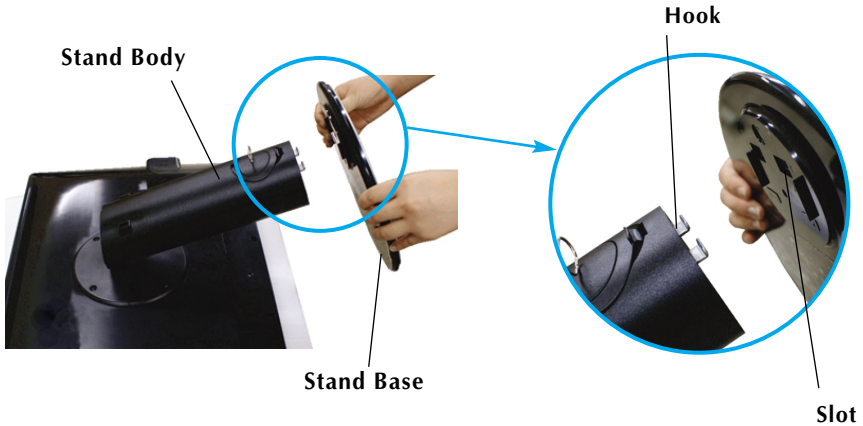
- Before setting up the monitor, ensure that the power to the monitor, the computer system, and other attached devices is turned off.

## Connecting the stand base or Removing the stand base

1. Place the monitor with its front facing downward on a cushion or soft cloth.



2. Align the hooks on the Stand Body with the matching slots in the Stand Base.
3. Insert the hooks into slots.



### Warning

- The tape and locking pin may only be removed from those monitors equipped with a standing base when the base is pulled up. Otherwise, you may be injured by the protruding sections of the stand.

4. Attach the monitor to the Stand Base by turning the screw to the right.

**Screw** : Turn the screw by using the screw handle.



5. Lift and turn the monitor to face towards the front after the connection is made to the female part of the cable you're attaching.
6. Take the screw out by turning to the left to separate the monitor and Stand Base.

#### Important

- This illustration depicts the general model of connection. Your monitor may differ from the items shown in the picture.
- Do not carry the product upside down holding only the stand base. The product may fall and get damaged or injure your foot.

# Connecting the Display

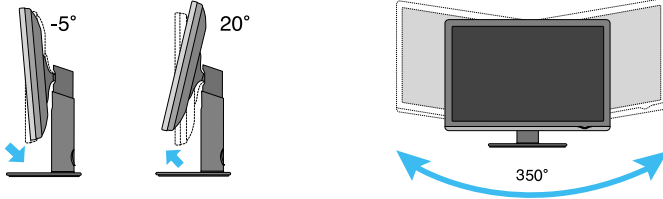
- Before setting up the monitor, ensure that the power to the monitor, the computer system, and other attached devices is turned off.

## Positioning your display

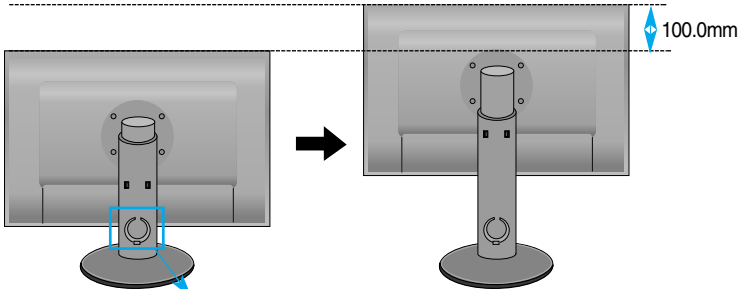
1. Adjust the position of the panel in various ways for maximum comfort.

- Tilt Range :  $-5^{\circ}$ ~ $20^{\circ}$

- Swivel Range :  $350^{\circ}$



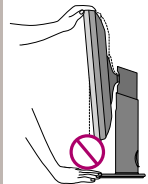
- Height Range : maximum 3.94 inch (100.0mm)



\* Please be sure to remove the Locking pin to adjust the height.

### Ergonomic

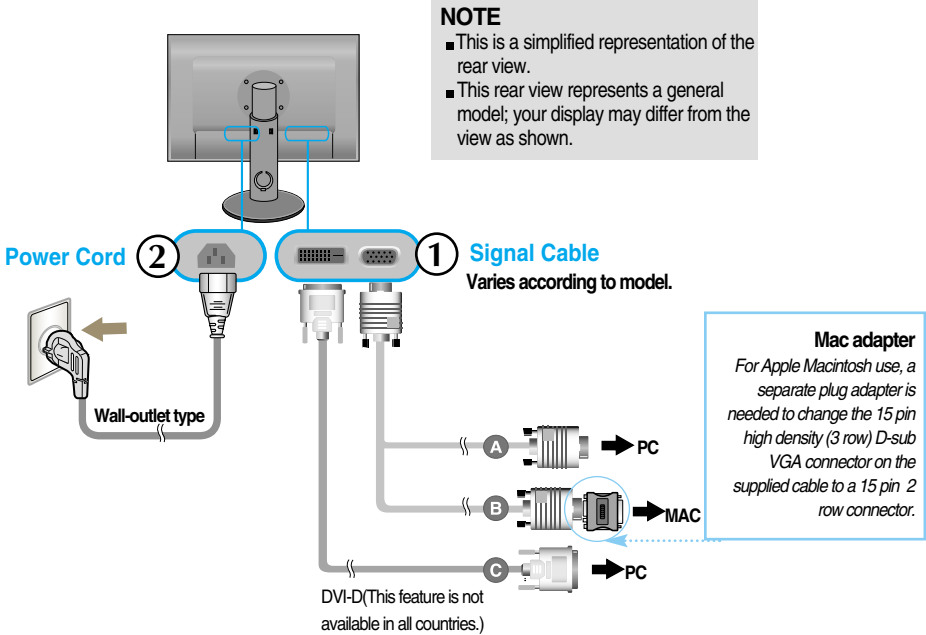
- You do not need to replace the Locking pin after it is removed, to adjust its height.
- It is recommended that in order to maintain an ergonomic and comfortable viewing position, the forward tilt angle of the monitor should not exceed 5 degrees.
- When adjusting the angle of the screen, do not put your finger(s) in between the head of the monitor and the stand body. You can hurt your finger(s).



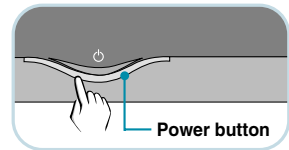
## Using the Computer

1. Make sure to turn off the computer and product.  
Connect signal cable ① and power cord ② in order, then tighten the screw of the signal cable.

- A Connect D-sub Cable (PC)
- B Connect D-sub Cable (Mac)
- C Connect DVI-D Cable



2. Touch the power button on the front of panel to turn the power on. When monitor power is turned on, the 'Self Image Setting Function' is executed automatically. (Only Analog Mode)



### NOTE

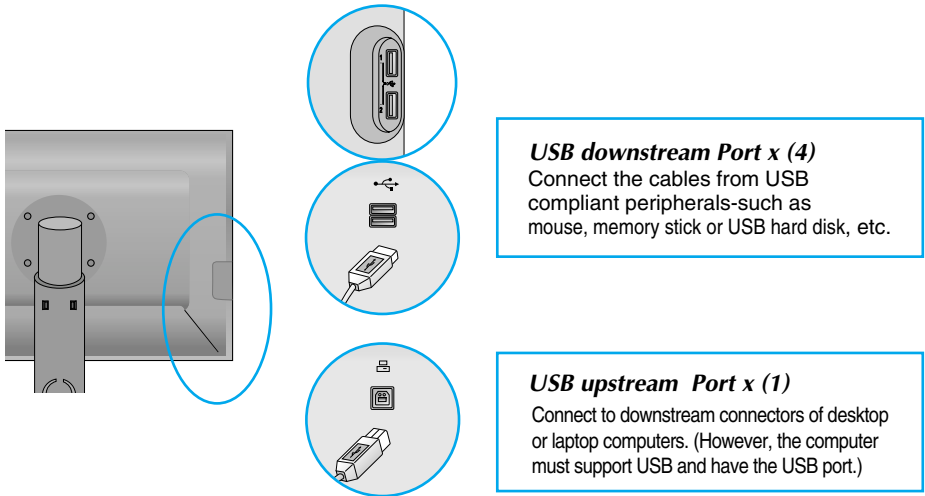
'Self Image Setting Function'? This function provides the user with optimal display settings. When the user connects the monitor for the first time, this function automatically adjusts the display to optimal settings for individual input signals.

'AUTO/SET Function'? When you encounter problems such as blurry screen, blurred letters, screen flicker or tilted screen while using the device or after changing screen resolution, touch the AUTO/SET function button to improve resolution.

## Connecting the USB(Universal Serial Bus) Cable

"USB (Universal Serial Bus)" is an innovation in connecting your different desktop peripherals conveniently to your computer. By using the USB, you will be able to connect your mouse, keyboard, and other peripherals to your display instead of having to connect them to your computer. This will give you greater flexibility in setting up your system. USB allows you to connect a chain of up to 120 devices on a single USB port; and you can "hot" plug (attach them while the computer is running) or unplug them while maintaining the Plug and the Plug auto detection and configuration. This display has an integrated BUS-powered USB hub, allowing up to 2 other USB devices to be attached it.

1. Connect the upstream port of the display to the downstream port of the USB compliant PC or another hub using the USB cable. (Computer must have a USB port)
2. Connect the USB compliant peripherals to the downstream ports of the display.



3. The monitor's USB terminal supports USB 2.0 and High Speed cables.

|                   | High Speed              | Full Speed              | Low Speed               |
|-------------------|-------------------------|-------------------------|-------------------------|
| Data Rate         | 480Mbps                 | 12Mbps                  | 1.5Mbps                 |
| Power Consumption | 2.5W<br>(Max,each Port) | 2.5W<br>(Max,each Port) | 2.5W<br>(Max,each Port) |

### NOTE

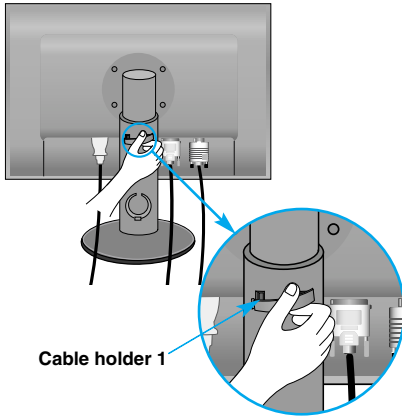
- To activate the USB hub function, the display must be connected to a USB compliant PC(OS) or another hub with the USB cable(enclosed).
- When connecting the USB cable, check that the shape of the connector at the cable side matches the shape at the connecting side.
- Even if the display is in a power saving mode, USB compliant devices will function when they are connected the USB ports(both the upstream and downstream) of the display.



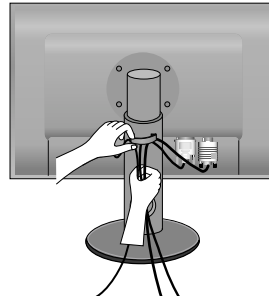
## To arrange the cables

Connect the power cord and the signal cable as shown in the figure and then fix them to the cable holders 1 and 2.

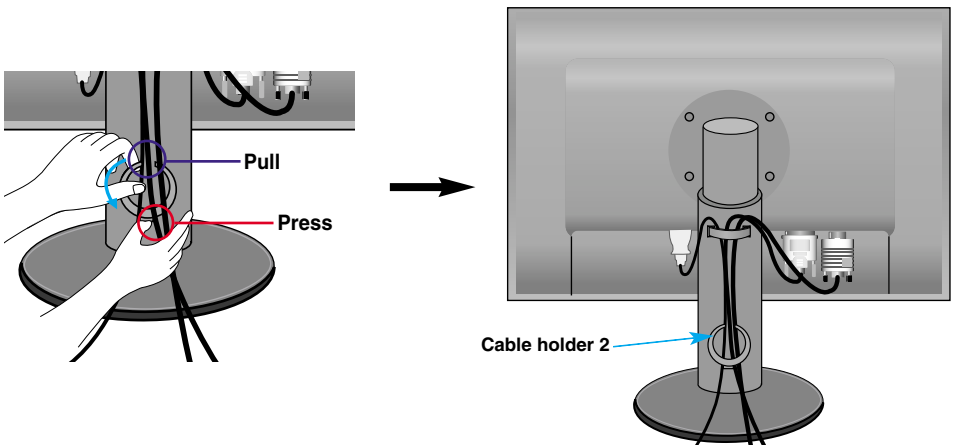
1. Please insert the **cable holder 1** into the hole.



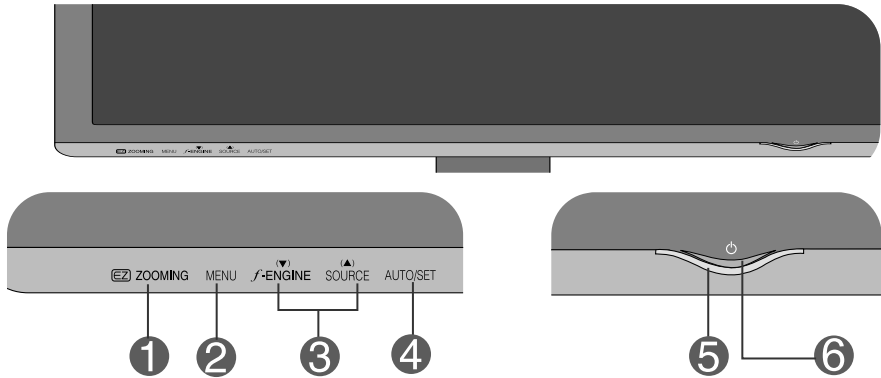
2. Please put the power cord and the signal cable in the cable holder 1.



3. Please put the power cord and the signal cable in the cable holder 2. While pressing the bottom of cable holder 2 with one hand, pull the top of it with the other hand as shown in the picture.



## Front Panel Controls



### 1 ZOOMING

At the current display, Use 'EZ Zooming' Key, then the display resolution is transferred to the one step low resolution. Use 'EZ Zooming' Key one more, the display is back to the original display.

Those with poor eyesight such as the elderly, those who have difficulty using computers and children can enlarge text or pictures by adjusting resolution with a single touch.

- To use this feature, please install forteManager program in the enclosed CD-ROM.
- Recommend resolution are 1920x1200, 1680 x 1050, 1600 x 1200, 1280 x 1024, 1024 x 768, 800 x 600.
- The setting method can differ by O/S or video card. In this case, Please ask to the computer or the video card manufacturer.

### 2 **MENU Button**

Use this button to enter or exit the On Screen Display.



#### **OSD LOCKED/UNLOCKED**

This function allows you to lock the current control settings, so that they cannot be inadvertently changed. Touch the **MENU button** for several seconds. The message "**OSD LOCKED**" should appear.

If you want to unlock, touch the **MENU button** again for several seconds. The message "**OSD UNLOCKED**" should appear.

3

## ▼ ▲ Buttons

Use these buttons to select or adjust functions in the On Screen Display.

## f•ENGINE ▼

For more information, refer to page A17.



## ▲ SOURCE (SOURCE Hot key)

Use this button to make D-Sub or DVI connector active. This feature is used when two computers are connected to the display. The default setting is D-Sub.

4

## AUTO/SET Button

Use this button to enter a selection in the On Screen Display.

### AUTO IMAGE ADJUSTMENT

When adjusting your display settings, always touch the **AUTO/SET** button before entering the On Screen Display(OSD). This will automatically adjust your display image to the ideal settings for the current screen resolution size (display mode).

The best display mode is

26 inch monitor : **1920 x 1200**



5

## Power Button

Use this button to turn the display on or off.

6

## Power Indicator

This Indicator lights up blue when the display operates normally(On Mode). If the display is in Sleep Mode (Energy Saving), this indicator color changes to amber.

## Screen Adjustment

**Making adjustments to the image size, position and operating parameters of the display is quick and easy with the On Screen Display Control system. A short example is given below to familiarize you with the use of the controls. The following section is an outline of the available adjustments and selections you can make using the OSD.**

### NOTE

- Allow the display to stabilize for at least 30 minutes before making image adjustments.

To make adjustments in the On Screen Display, follow these steps:

**MENU → ▼ ▲ → AUTO/SET → ▼ ▲ → MENU**

- 1** Touch the MENU Button, then the main menu of the OSD appears.
- 2** To access a control, use the ▼ or ▲ Buttons. When the icon you want becomes highlighted, touch the AUTO/SET Button.
- 3** Use the ▼ / ▲ Buttons to adjust the image to the desired level. Use the AUTO/SET Button to select other sub-menu items.
- 4** Touch the MENU Button once to return to the main menu to select another function. Touch the MENU Button twice to exit from the OSD.

# On Screen Display(OSD) Selection and Adjustment

The following table indicates all the On Screen Display control, adjustment, and setting menus.

| Main menu                                              | Sub-menu        |            | A | D | Reference                                                         |
|--------------------------------------------------------|-----------------|------------|---|---|-------------------------------------------------------------------|
| PICTURE                                                | BRIGHTNESS      |            | ● | ● | To adjust the brightness, contrast and gamma of the screen        |
|                                                        | CONTRAST        |            | ● | ● |                                                                   |
|                                                        | GAMMA           |            | ● | ● |                                                                   |
| COLOR                                                  | PRESET          | sRGB       | ● | ● | To customize the color of the screen                              |
|                                                        |                 | 6500K      | ● | ● |                                                                   |
|                                                        |                 | 9300K      | ● | ● |                                                                   |
|                                                        | RED             |            | ● | ● |                                                                   |
|                                                        | GREEN           |            | ● | ● |                                                                   |
|                                                        | BLUE            |            | ● | ● |                                                                   |
| POSITION                                               | HORIZONTAL      |            | ● |   | To adjust the position of the screen                              |
|                                                        | VERTICAL        |            | ● |   |                                                                   |
| TRACKING                                               | CLOCK           |            | ● |   | To improve the clarity and stability of the screen                |
|                                                        | PHASE           |            | ● |   |                                                                   |
|                                                        | SHARPNESS       |            | ● | ● |                                                                   |
| SETUP                                                  | LANGUAGE        |            | ● | ● | To customize the screen status for a user's operating environment |
|                                                        | OSD POSITION    | HORIZONTAL | ● | ● |                                                                   |
|                                                        |                 | VERTICAL   | ● | ● |                                                                   |
|                                                        | WHITE BALANCE   |            | ● |   |                                                                   |
|                                                        | POWER INDICATOR |            | ● | ● |                                                                   |
|                                                        | SOUND           |            | ● | ● |                                                                   |
|                                                        | 4:3 IN WIDE     |            | ● | ● |                                                                   |
|                                                        | FACTORY RESET   |            | ● | ● |                                                                   |
| FLATRON F-ENGINE                                       | MOVIE / TEXT    |            | ● | ● | To select or customize desired image settings                     |
|                                                        | USER            |            | ● | ● |                                                                   |
|                                                        | NORMAL          |            | ● | ● |                                                                   |
| ● : Adjustable<br>A : Analog Input   D : Digital Input |                 |            |   |   |                                                                   |

## NOTE

- The order of icons may differ depending on the model (A12~A17).

You were introduced to the procedure of selecting and adjusting an item using the OSD system. Listed below are the icons, icon names, and icon descriptions of the all items shown on the Menu.

Touch the MENU Button, then the main menu of the OSD appears.

The diagram illustrates the OSD menu structure. The main menu is titled "PICTURE" and contains several sub-menus: "BRIGHTNESS" (value 50), "CONTRAST" (value 50), and "GAMMA" (value 0). Each sub-menu has a corresponding icon in a vertical list on the left: a monitor icon for BRIGHTNESS, an RGB icon for CONTRAST, and a monitor icon for GAMMA. A "Button Tip" section at the bottom provides instructions for navigation: MENU (Exit), ▲▼ (Adjust), SET (Enter), and a downward arrow (Select another sub-menu).

Menu Name — PICTURE

Icons — BRIGHTNESS 50  
CONTRAST 50  
GAMMA 0

Sub-menus

Button Tip

- MENU : Exit
- ▲ ▼ : Adjust (Decrease/Increase)
- SET : Enter
- : Select another sub-menu

## NOTE

- OSD (On Screen Display) menu languages on the monitor may differ from the manual.

| Main menu | Sub menu | Description |
|-----------|----------|-------------|
|-----------|----------|-------------|



## PICTURE



### BRIGHTNESS

To adjust the brightness of the screen.

### CONTRAST

To adjust the contrast of the screen.

### GAMMA

Set your own gamma value. : -50/0/50  
On the monitor, high gamma values display whitish images and low gamma values display high contrast images.

- **MENU** : Exit
- **▼** : Decrease
- **▲** : Increase
- **SET** : Select another sub-menu



## COLOR



### PRESET

Select the screen color.

- sRGB: Set the screen color to fit the SRGB standard color specification.
- 6500K: Slightly reddish white.
- 9300K: Slightly bluish white.

### RED

Set your own red color levels.

### GREEN

Set your own green color levels.

### BLUE

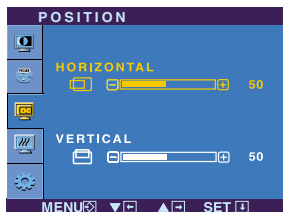
Set your own blue color levels.

- **MENU** : Exit
- **▼** : Decrease
- **▲** : Increase
- **SET** : Select another sub-menu

| Main menu | Sub menu | Description |
|-----------|----------|-------------|
|-----------|----------|-------------|



## POSITION



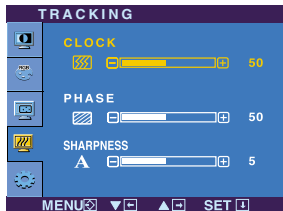
**HORIZONTAL** To move image left and right.

**VERTICAL** To move image up and down.

- **MENU** : Exit
- **▼** : Decrease
- **▲** : Increase
- **SET** : Select another sub-menu



## TRACKING



**CLOCK** To minimize any vertical bars or stripes visible on the screen background. The horizontal screen size will also change.

**PHASE** To adjust the focus of the display. This item allows you to remove any horizontal noise and clear or sharpen the image of characters.

**SHARPNESS** To adjust the clearness of the screen.

- **MENU** : Exit
- **▼** : Decrease
- **▲** : Increase
- **SET** : Select another sub-menu

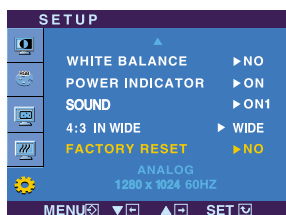
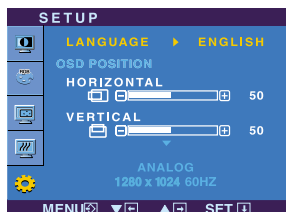


# On Screen Display(OSD) Selection and Adjustment

| Main menu | Sub menu | Description |
|-----------|----------|-------------|
|-----------|----------|-------------|



## SETUP



- **MENU** : Exit
- **▼** : Adjust
- **▲** : Adjust
- **SET** : Select another sub-menu

**LANGUAGE** To choose the language in which the control names are displayed.

**OSD POSITION** To adjust position of the OSD window on the screen.

**WHITE BALANCE** If the output of the video card is different the required specifications, the color level may deteriorate due to video signal distortion. Using this function, the signal level is adjusted to fit into the standard output level of the video card in order to provide the optimal image.  
Activate this function when white and black colors are present in the screen.

**POWER INDICATOR** Use this function to set the power indicator on the front side of the monitor to **ON** or **OFF**.  
If you set **OFF**, it will go off.  
If you set **ON** at any time, the power indicator will automatically be turned on.

**SOUND** A function that a user can turn on1, on2 or off the sound when the monitor is powered off or on or the menu button is touched.

**4:3 IN WIDE** To select the image size of the screen.



| Resolution | Screen ratio |
|------------|--------------|
| 1600x1200  | 4 : 3        |
| 1280x1024  | 5 : 4        |
| 1152x864   | 4 : 3        |
| 1024x768   | 4 : 3        |
| 800x600    | 4 : 3        |
| 640x480    | 4 : 3        |
| 720x480    | 3 : 2        |

**4:3** : Depending on the input video signal ratio, it is automatically changed to an optimized screen ratio. (The 1280X1024 input signal is changed to 5:4 ratio and 1024X768 to 4:3.)

The input signal which the 4:3 IN WIDE does not support '4:3' is the following.

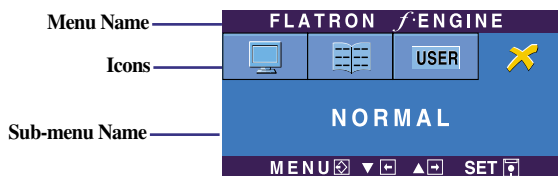
- The 26 inch monitor is 720x400,1280x768,1360x768, 1440x900,1680x1050,1920x1200.

**FACTORY RESET** Restore all factory default settings except "**LANGUAGE.**"  
Touch the **▼** button to reset immediately.

If this does not improve the screen image, restore the factory default settings. If necessary, perform the white balance function again. This function will be enabled only when the input signal is an analog signal.

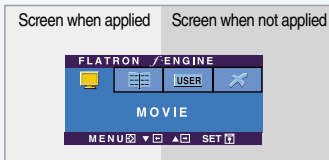
# On Screen Display(OSD) Selection and Adjustment

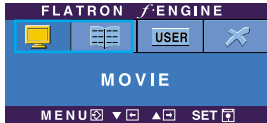
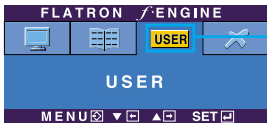

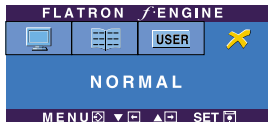
- ■ ■ The OSD screen will appear when you touch the **f-ENGINE** ▼ button on the front of the monitor.



## FLATRON F-ENGINE

When you execute F-ENGINE, two tones will appear on the screen as shown. The applied screen will appear on the left side, whereas the non-applied screen will appear on the right side. Touch the SET button to use the adjusted screen.



| Main menu                                                                                                                                                                                                                                                                                                                                                                                                                    | Sub menu          | Description                                                                                                                                                                                                                                                                                                                                                                                                                                                                                                                                                                                                                                                                                                                                                                               |
|------------------------------------------------------------------------------------------------------------------------------------------------------------------------------------------------------------------------------------------------------------------------------------------------------------------------------------------------------------------------------------------------------------------------------|-------------------|-------------------------------------------------------------------------------------------------------------------------------------------------------------------------------------------------------------------------------------------------------------------------------------------------------------------------------------------------------------------------------------------------------------------------------------------------------------------------------------------------------------------------------------------------------------------------------------------------------------------------------------------------------------------------------------------------------------------------------------------------------------------------------------------|
|  <ul style="list-style-type: none"> <li>■ <b>MENU</b> : Exit</li> <li>■ ▼, ▲ : Move</li> <li>■ <b>SET</b> : Select</li> </ul>                                                                                                                                                                                                               | <b>MOVIE TEXT</b> | <p>This feature lets you easily select the best desired image condition optimized to the environment (ambient illumination, image types etc).</p> <p><b>MOVIE</b>: For animation images in videos or movies<br/> <b>TEXT</b>: For text images (Word processing etc.)</p>                                                                                                                                                                                                                                                                                                                                                                                                                                                                                                                  |
|  <p>To adjust the <b>USER</b> sub-menu function, touch the <b>SET</b> Button</p>  <ul style="list-style-type: none"> <li>■ <b>MENU</b> : Exit</li> <li>■ ▼ : Decrease</li> <li>■ ▲ : Increase</li> <li>■ <b>SET</b> : Select another sub-menu</li> </ul> | <b>USER</b>       | <p>You can manually adjust brightness, ACE or RCM. You can save or restore the adjusted value even when using a different environment.</p> <p>... ● (Brightness): Adjusts screen brightness.</p> <p>... <b>ACE</b>(Adaptive Clarity Enhancer): Selects the clarity mode.</p> <ul style="list-style-type: none"> <li>0 Not applied</li> <li>1 Weak clarity and luminosity contrast.</li> <li>2 Strong clarity and luminosity contrast.</li> </ul> <p>... <b>RCM</b>(Real Color Management): Selects the color mode.</p> <ul style="list-style-type: none"> <li>0 Not applied</li> <li>1 Green enhance</li> <li>2 Flesh tone</li> <li>3 Color Enhance</li> </ul> <p>Select the <b>SAVE</b> sub-menu using the <b>SET</b> button and save the <b>YES</b> value using the <b>buttons</b>.</p> |
|                                                                                                                                                                                                                                                                                                                                           | <b>NORMAL</b>     | <p>This is under normal operating conditions.</p>                                                                                                                                                                                                                                                                                                                                                                                                                                                                                                                                                                                                                                                                                                                                         |

Check the following before calling for service.

| No image appears                                                                                           |                                                                                                                                                                                                                                                                    |
|------------------------------------------------------------------------------------------------------------|--------------------------------------------------------------------------------------------------------------------------------------------------------------------------------------------------------------------------------------------------------------------|
| <ul style="list-style-type: none"><li>● Is the power cord of the display connected?</li></ul>              | <ul style="list-style-type: none"><li>• Check and see if the power cord is connected properly to the power outlet.</li></ul>                                                                                                                                       |
| <ul style="list-style-type: none"><li>● Is the power indicator light on?</li></ul>                         | <ul style="list-style-type: none"><li>• Touch the Power button.</li></ul>                                                                                                                                                                                          |
| <ul style="list-style-type: none"><li>● Is the power on and the power indicator blue or green?</li></ul>   | <ul style="list-style-type: none"><li>• Adjust the brightness and the contrast.</li></ul>                                                                                                                                                                          |
| <ul style="list-style-type: none"><li>● Is the power indicator amber?</li></ul>                            | <ul style="list-style-type: none"><li>• If the display is in power saving mode, try moving the mouse or pressing any key on the keyboard to bring up the screen.</li><li>• Try to turn on the PC.</li></ul>                                                        |
| <ul style="list-style-type: none"><li>● Do you see an "OUT OF RANGE" message on the screen?</li></ul>      | <ul style="list-style-type: none"><li>• This message appears when the signal from the PC (video card) is out of horizontal or vertical frequency range of the display. See the 'Specifications' section of this manual and configure your display again.</li></ul> |
| <ul style="list-style-type: none"><li>● Do you see a "CHECK SIGNAL CABLE" message on the screen?</li></ul> | <ul style="list-style-type: none"><li>• This message appears when the signal cable between your PC and your display is not connected. Check the signal cable and try again.</li></ul>                                                                              |

| Do you see a "OSD LOCKED" message on the screen?                                                     |                                                                                                                                                                                                                                                                                                |
|------------------------------------------------------------------------------------------------------|------------------------------------------------------------------------------------------------------------------------------------------------------------------------------------------------------------------------------------------------------------------------------------------------|
| <ul style="list-style-type: none"><li>● Do you see "OSD LOCKED" when you push MENU button?</li></ul> | <ul style="list-style-type: none"><li>• You can secure the current control settings, so that they cannot be inadvertently changed. You can unlock the OSD controls at any time by pushing the <b>MENU</b> button for several seconds: the message "<b>OSD UNLOCKED</b>" will appear.</li></ul> |

## Display image is incorrect

- |                                                                                                                                               |                                                                                                                                                                                                                                                                                                                                                                                                                                                                                                              |
|-----------------------------------------------------------------------------------------------------------------------------------------------|--------------------------------------------------------------------------------------------------------------------------------------------------------------------------------------------------------------------------------------------------------------------------------------------------------------------------------------------------------------------------------------------------------------------------------------------------------------------------------------------------------------|
| <ul style="list-style-type: none"><li>● <b>Display Position is incorrect.</b></li></ul>                                                       | <ul style="list-style-type: none"><li>• Touch the <b>AUTO/SET</b> button to automatically adjust your display image to the ideal setting. If the results are unsatisfactory, adjust the image position using the <b>H position and V position</b> icon in the on screen display.</li></ul>                                                                                                                                                                                                                   |
| <ul style="list-style-type: none"><li>● <b>On the screen background, vertical bars or stripes are visible.</b></li></ul>                      | <ul style="list-style-type: none"><li>• Touch the <b>AUTO/SET</b> button to automatically adjust your display image to the ideal setting. If the results are unsatisfactory, decrease the vertical bars or stripes using the <b>CLOCK</b> icon in the on screen display.</li></ul>                                                                                                                                                                                                                           |
| <ul style="list-style-type: none"><li>● <b>Any horizontal noise appearing in any image or characters are not clearly portrayed.</b></li></ul> | <ul style="list-style-type: none"><li>• Touch the <b>AUTO/SET</b> button to automatically adjust your display image to the ideal setting. If the results are unsatisfactory, decrease the horizontal bars using the <b>PHASE</b> icon in the on screen display.</li><li>• Check <b>Control Panel --&gt; Display --&gt; Settings</b> and adjust the display to the recommended resolution or adjust the display image to the ideal setting. Set the color setting higher than 24 bits (true color).</li></ul> |

## Important

- Check **Control Panel --> Display --> Settings** and see if the frequency or the resolution were changed. If yes, readjust the video card to the recommend resolution.
- **Reasons for Recommending Optimal Resolution** : The aspect ratio is 16:10. If the input resolution is not 16:10 (for instance, 16:9, 5:4, 4:3), you might encounter problems such as blurred letters, blurry screen, cut-off screen display or tilted screen.
- The setting method can differ by computer and O/S (Operation System), and resolution mentioned above may not be supported by the video card performance. In this case, please ask to the computer or the video card manufacturer.

## Display image is incorrect

- |                                                                                                |                                                                                                                                                                                                                                                                                                                           |
|------------------------------------------------------------------------------------------------|---------------------------------------------------------------------------------------------------------------------------------------------------------------------------------------------------------------------------------------------------------------------------------------------------------------------------|
| <ul style="list-style-type: none"><li>● <b>The screen color is mono or abnormal.</b></li></ul> | <ul style="list-style-type: none"><li>• Check if the signal cable is properly connected and use a screwdriver to fasten if necessary.</li><li>• Make sure the video card is properly inserted in the slot.</li><li>• Set the color setting higher than 24 bits (true color) at <b>Control Panel - Settings</b>.</li></ul> |
| <ul style="list-style-type: none"><li>● <b>The screen blinks.</b></li></ul>                    | <ul style="list-style-type: none"><li>• Check if the screen is set to interlace mode and if yes, change it to the recommend resolution.</li></ul>                                                                                                                                                                         |

## Have you installed the display driver?

- |                                                                                                                                                |                                                                                                                                                                                                                                                                             |
|------------------------------------------------------------------------------------------------------------------------------------------------|-----------------------------------------------------------------------------------------------------------------------------------------------------------------------------------------------------------------------------------------------------------------------------|
| <ul style="list-style-type: none"><li>● <b>Have you installed the display driver?</b></li></ul>                                                | <ul style="list-style-type: none"><li>• Be sure to install the display driver from the display driver CD (or diskette) that comes with your display. Or, you can also download the driver from our web site: <a href="http://www.lge.com">http://www.lge.com</a>.</li></ul> |
| <ul style="list-style-type: none"><li>● <b>Do you see an "Unrecognized monitor, Plug&amp;Play (VESA DDC) monitor found" message?</b></li></ul> | <ul style="list-style-type: none"><li>• Make sure to check if the video card supports Plug&amp;Play function.</li></ul>                                                                                                                                                     |

# Specifications

|                                 |                                                                                                                            |                                                        |                         |
|---------------------------------|----------------------------------------------------------------------------------------------------------------------------|--------------------------------------------------------|-------------------------|
| <b>Display</b>                  | 26 inches (64.868cm) Flat Panel Active matrix-TFT LCD<br>Anti-Glare coating<br>26 inches viewable<br>0.2865 mm pixel pitch |                                                        |                         |
| <b>Sync Input</b>               | Horizontal Freq.                                                                                                           | 30 - 83 kHz (Automatic)                                |                         |
|                                 | Vertical Freq.                                                                                                             | 56 - 75 Hz (Automatic)                                 |                         |
|                                 | Input Form                                                                                                                 | Separate Sync.<br>SOG (Sync On Green)<br>Digital(HDCP) |                         |
| <b>Video Input</b>              | Signal Input                                                                                                               | 15 pin D-Sub Connector<br>DVI-D Connector (Digital)    |                         |
|                                 | Input Form                                                                                                                 | RGB Analog (0.7 Vp-p/ 75 ohm), Digital                 |                         |
| <b>Resolution</b>               | Max                                                                                                                        | VESA 1920 x 1200 @60 Hz                                |                         |
|                                 | Recommend                                                                                                                  | VESA 1920 x 1200 @60 Hz                                |                         |
| <b>Plug&amp;Play</b>            | DDC 2B                                                                                                                     |                                                        |                         |
| <b>Power Consumption</b>        | On Mode                                                                                                                    | : 110W(Typ.),130W(USB Full load)                       |                         |
|                                 | Sleep Mode                                                                                                                 | ≤ 1 W                                                  |                         |
|                                 | Off Mode                                                                                                                   | ≤ 1 W                                                  |                         |
| <b>Dimensions &amp;Weight</b>   |                                                                                                                            | With Stand                                             | Without Stand           |
|                                 | Width                                                                                                                      | 60.19 cm / 23.70 inches                                | 60.19 cm / 23.70 inches |
|                                 | Height                                                                                                                     | 46.32 cm / 18.24 inches(Min)                           | 41.37 cm / 16.29 inches |
|                                 |                                                                                                                            | 56.32 cm / 22.17 inches(Max)                           |                         |
|                                 | Depth                                                                                                                      | 27.02 cm / 10.64 inches                                | 8.10 cm / 3.19 inches   |
| Net                             | 9.9 kg (21.83 lbs)                                                                                                         |                                                        |                         |
| <b>Range</b>                    | Tilt                                                                                                                       | -5° ~20°                                               |                         |
|                                 | Swivel                                                                                                                     | 350°                                                   |                         |
|                                 | Height                                                                                                                     | 100 mm / 3.94 inches                                   |                         |
| <b>Power Input</b>              | AC 100-240V~ 50/60Hz 1.2A                                                                                                  |                                                        |                         |
| <b>Environmental Conditions</b> | Operating Conditions                                                                                                       |                                                        |                         |
|                                 | Temperature                                                                                                                | 10°C to 35 °C                                          |                         |
|                                 | Humidity                                                                                                                   | 10 % to 80 % non-Condensing                            |                         |
|                                 | Storage Conditions                                                                                                         |                                                        |                         |
|                                 | Temperature                                                                                                                | -20°C to 60 °C                                         |                         |
| Humidity                        | 5 % to 90 % non-Condensing                                                                                                 |                                                        |                         |

# Specifications

|                   |                                    |                     |
|-------------------|------------------------------------|---------------------|
| <b>Stand Base</b> | Attached ( ), Detached ( O )       |                     |
| <b>Power cord</b> | Wall-outlet type or PC-outlet type |                     |
| <b>USB</b>        | Standard                           | USB 2.0, Self-Power |
|                   | Data Rate                          | Max 480 Mbps        |
|                   | Power Consumption                  | Max 2.5W x 4        |

## NOTE

- Information in this document is subject to change without notice.

## Preset Modes (Resolution)

| Display Modes (Resolution) |      |             | Horizontal Freq. (kHz) | Vertical Freq. (Hz) |
|----------------------------|------|-------------|------------------------|---------------------|
| 1                          | VGA  | 640 x 480   | 31.469                 | 59.940              |
| 2                          | VESA | 640 x 480   | 37.500                 | 75.000              |
| 3                          | VESA | 720 x 480   | 35.162                 | 59.901              |
| 4                          | VGA  | 720 x 400   | 31.500                 | 70.156              |
| 5                          | VESA | 800 x 600   | 37.879                 | 60.317              |
| 6                          | VESA | 800 x 600   | 46.875                 | 75.000              |
| 7                          | VESA | 1024 x 768  | 48.363                 | 60.004              |
| 8                          | VESA | 1024 x 768  | 60.023                 | 75.029              |
| 9                          | VESA | 1152 x 864  | 67.500                 | 75.000              |
| 10                         | VESA | 1280 x 768  | 47.776                 | 59.870              |
| 11                         | VESA | 1280 x 768  | 60.289                 | 74.893              |
| 12                         | VESA | 1280 x 1024 | 63.981                 | 60.020              |
| 13                         | VESA | 1280 x 1024 | 79.976                 | 75.025              |
| 14                         | VESA | 1600 x 1200 | 75.000                 | 60.000              |
| 15                         | VESA | 1680 x 1050 | 64.674                 | 59.883              |
| 16                         | VESA | 1680 x 1050 | 65.290                 | 60.454              |
| *17                        | VESA | 1920 x 1200 | 74.038                 | 59.950              |

\*Recommend Mode

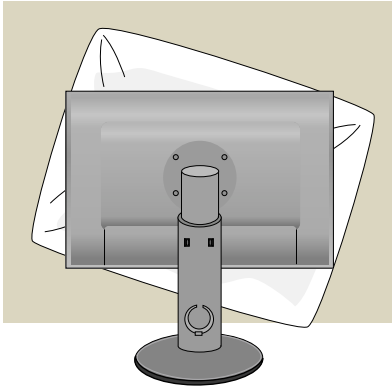
## Indicator

| MODE       | LED Color |
|------------|-----------|
| On Mode    | Blue      |
| Sleep Mode | Amber     |
| Off Mode   | Off       |

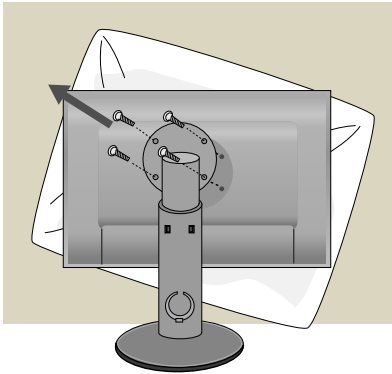


# Installing the Wall mount plate

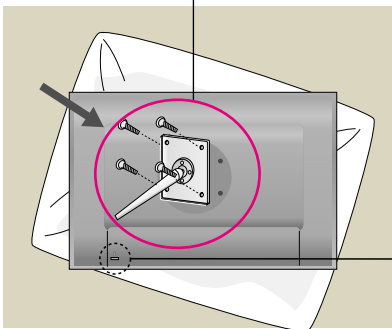
This monitor satisfies the specifications of the Wall mount plate or the interchange device.



1. After moving the product to face downward, make sure to place it on a soft cloth or a cushion to avoid surface damage.



2. Separate the head and the stand with the use of a screwdriver.

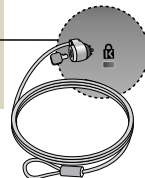


3. Install the Wall mount plate.

## Wall mount plate(Separate purchase)

This is stand-type or wall mount type and is connectable with Wall mount plate.

Please refer to the installation guide for more details, which is provided when Wall mount plate is purchased.



## Kensington Security Slot

Connected to a locking cable that can be purchased separately at most computer stores.

